


How pet waste makes its way to the ocean

 Pet waste left on the beach, street, or lawn runs off into our rivers, streams, and storm drains and eventually enters the ocean untreated.

 Bacteria can also persist and regrow in sand, sediments, and algae mats long after the source has been removed.



What to Do With Doo



Clean up after your pets and do your part to keep our water resources healthy!

For more information visit:
www.mainehealthybeaches.org



The Inside Scoop

Pet waste contributes to unsafe bacteria levels in water and sand.



Symptoms that can occur from contact with unsafe bacteria levels:

- Nausea
- Diarrhea
- Stomach cramps
- Chills and fever
- Skin rashes
- Infections (eyes, ears, nose, and throat)

What to do

 Pick it up with a plastic bag and place in a trash can or proper receptacle

 Flush it down the toilet
*Do not flush any type of bag

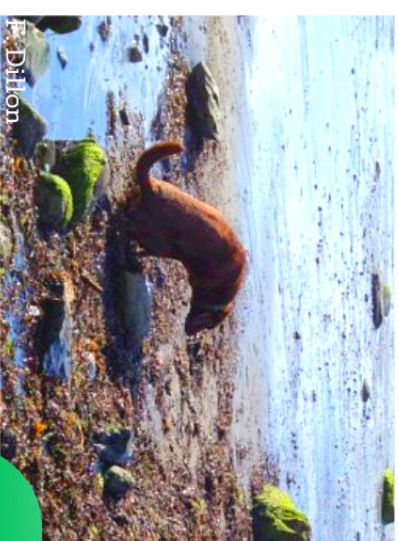
 Bury it in your yard
*Dig a hole about five inches deep and away from vegetable gardens

 Compost for use on flowers and other decorative plants.
*Do not use on vegetable gardens



The Bottom Line

Preventing pet waste from making its way into our water resources is an easy way you can help keep our beaches healthy and safe for swimming.



Did you know . . .

Just one gram of dog feces contains 23 million fecal coliform bacteria. That is nearly twice the 13 million found in human waste!

www.stophehogs.com/pdf/pathogens.pdf; Van der Wel 1995.

